

Art Direction | Fashion Styling | Creative Direction

2026

Lila Alimova 
Portfolio

[Instagram: @lilaalimova](#)

hello@lilaalimova.com

Fashion Stylist – Creative Direction – Art Direction – Editorial Styling – Campaign Styling

ABOUT ME

Style is the language I speak.

I approach styling like directing a film – each look is a frame, each project a personal story.

At the core of my work are sensuality and the intersection of strangeness and beauty. I have an art education and more than 12 years of experience in the industry.

I style editorials and campaigns, approaching my work like an artist – seeing style as a form of expression.

I work worldwide. Based in Bali – available worldwide





Instagram: @lilaalimova



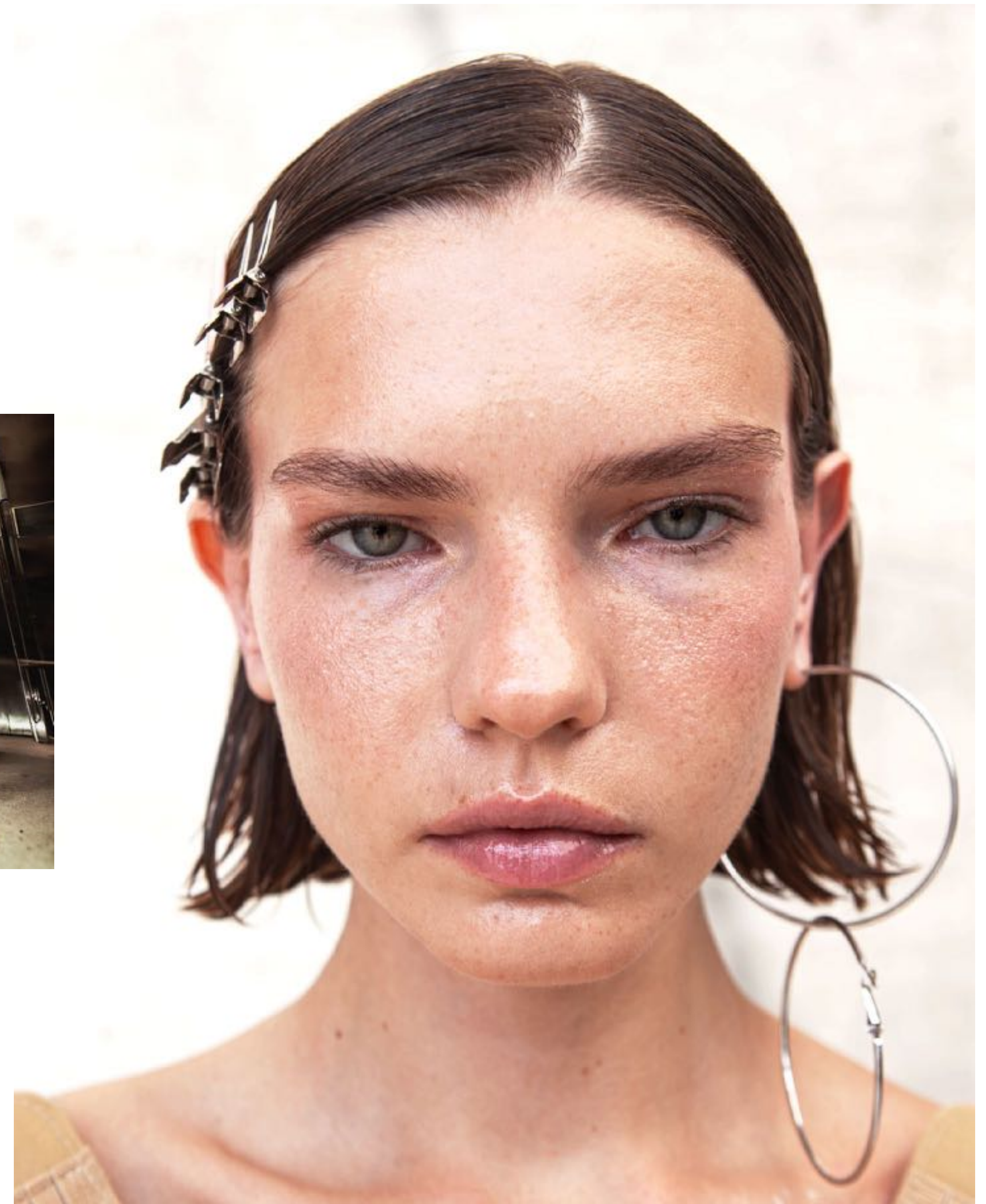
Each of my works is a confession.
I approach style like filmmaking:
each look a scene,
each frame a visual manifesto.



hello@lilaalimova.com



Style — futuristic fetish and neo-sport, with a subtle nod to the theater of the body.





*Photo: @noev_kirill Md: @bliz8zia Style: @lila.alimova Muq: @soya_muq Hair: @_viki_hair_Ph assist: @tim_kudryavii Producer:
@rusmustafaev Loc: @duxpransivo Thx: pzdtkv @someweirdt @egorkins.s*



Fantasies

Plastic



“Plastic Fantasies” is a visual exploration of femininity as performance — a fetishized gloss wrapped in retro-domestic surrealism. The project follows a modern pin-up heroine moving through artificial spaces with theatrical stillness and seductive control.

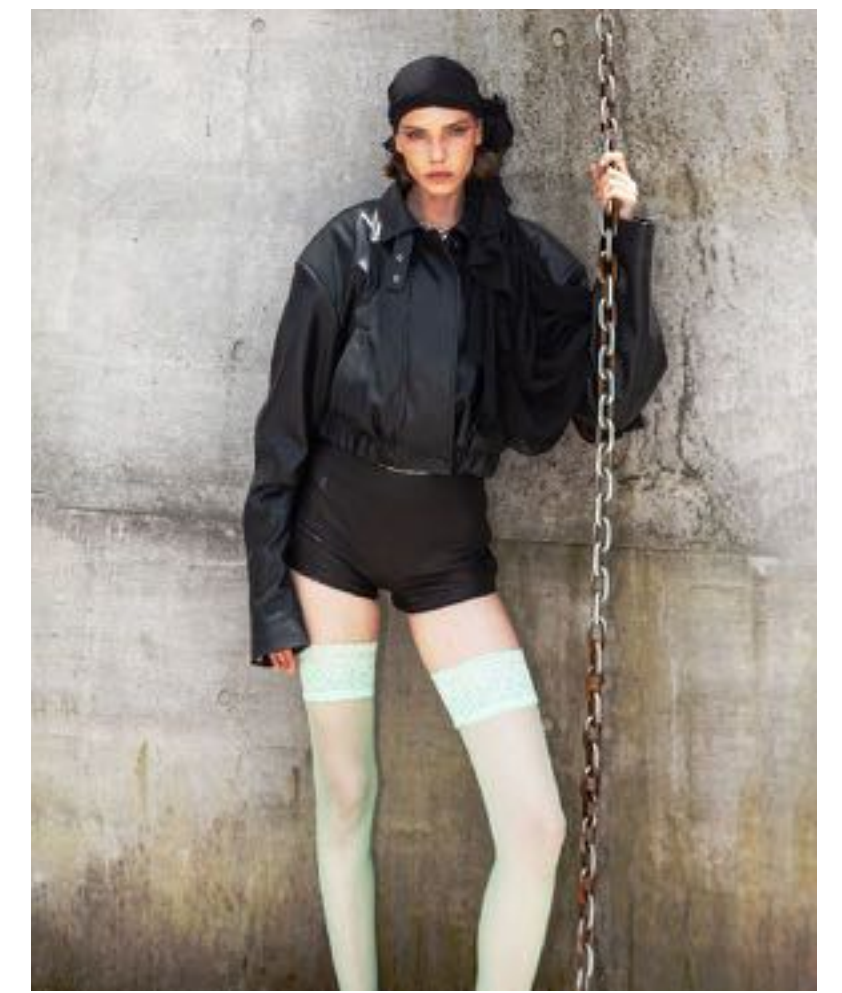


REBEL

128

From latex gloves to rhinestone-studded minis, she constructs herself as both icon and caricature — reclaiming power through intentional clichés. The camera doesn't dominate her — she choreographs every gaze. It's irony on heels, nostalgia in lipstick, and objectification turned into authorship.

Editorial published in REBEL Magazine



Instagram: @lilaalimova



hello@lilaalimova.com

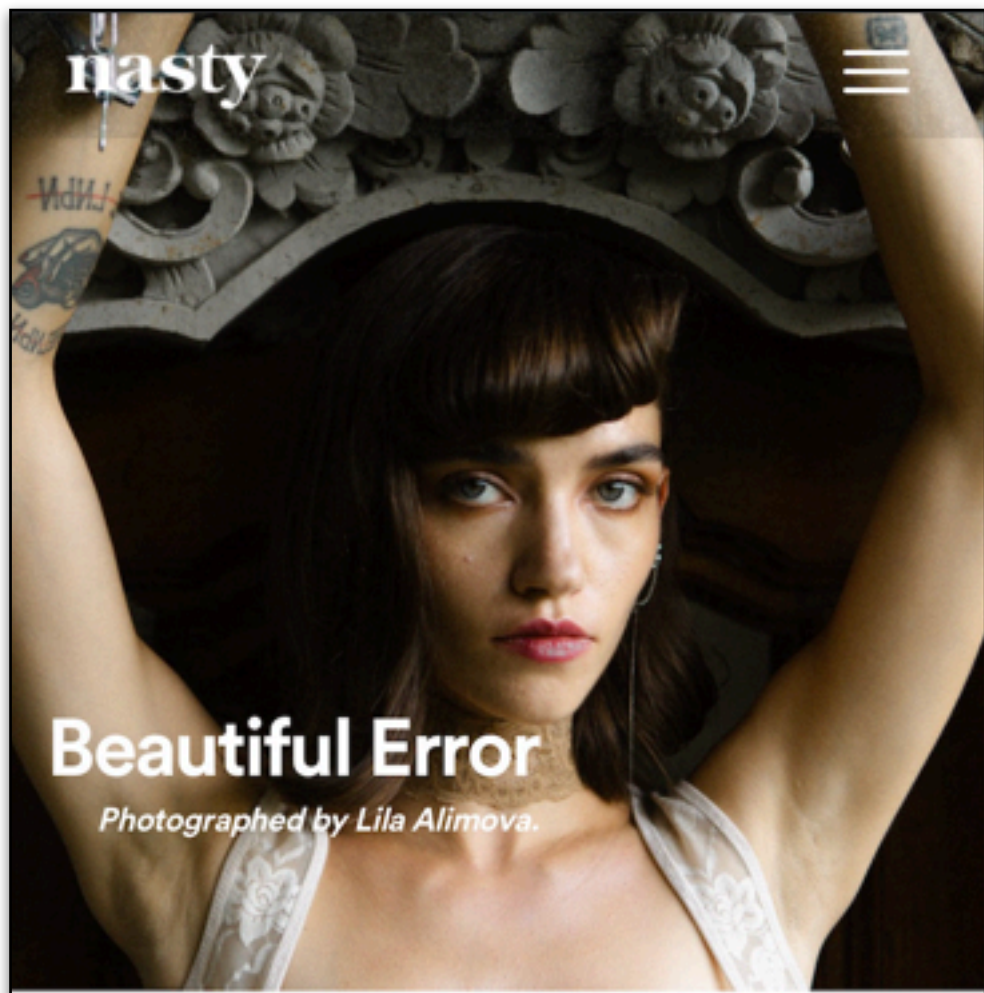


Staged Fantasies” is a visual exploration of femininity as performance
a fetishized gloss wrapped in retro-domestic surrealism.



The project follows a modern pin-up heroine moving through artificial spaces with theatrical stillness and seductive control.

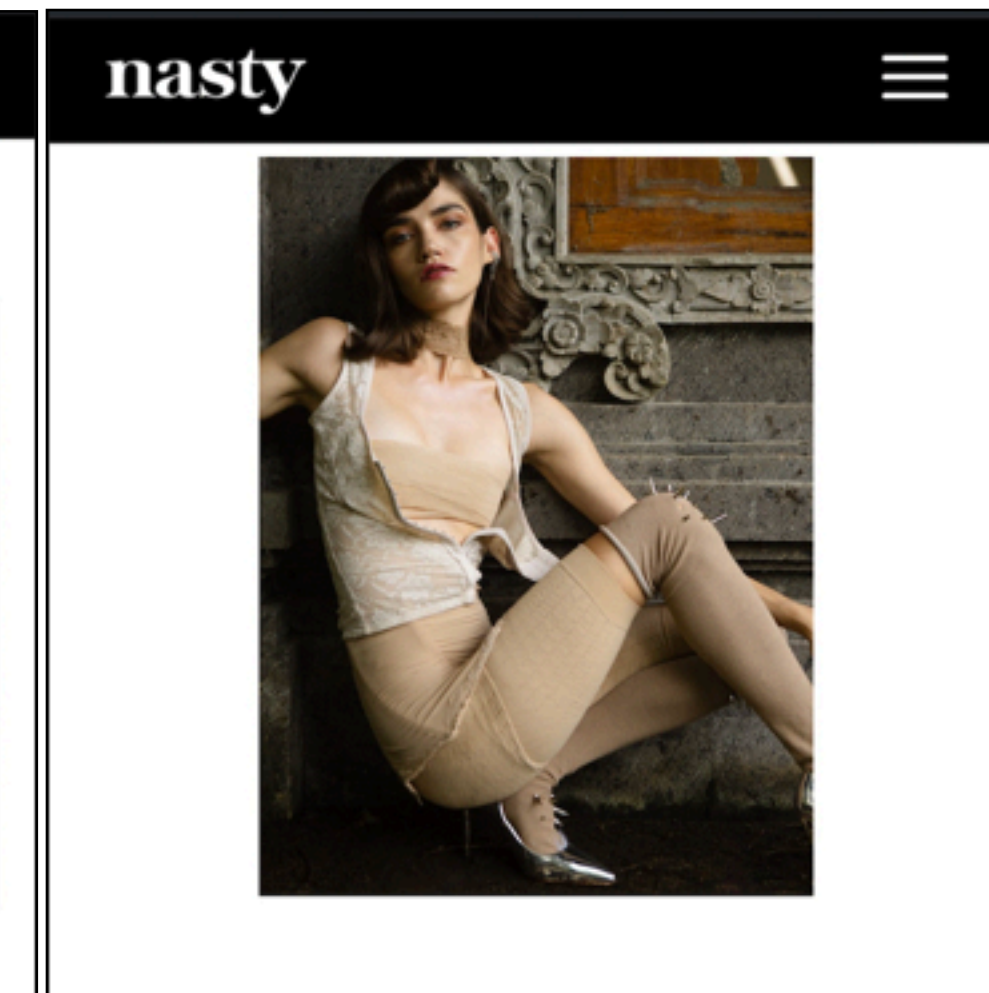
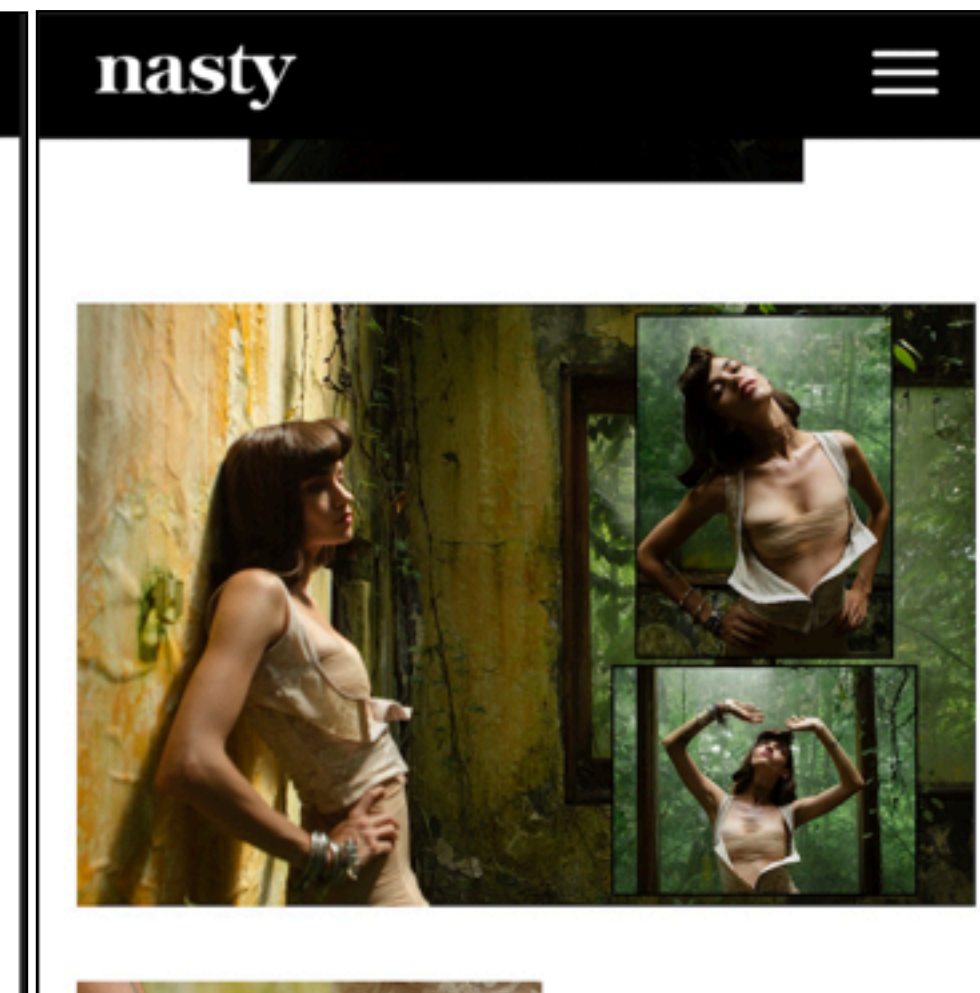
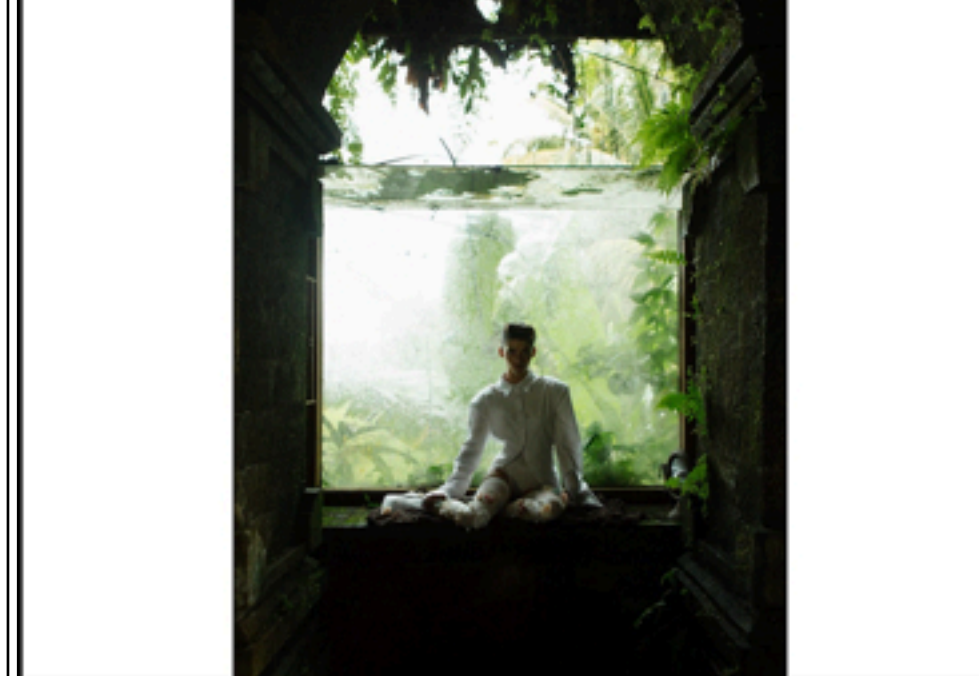
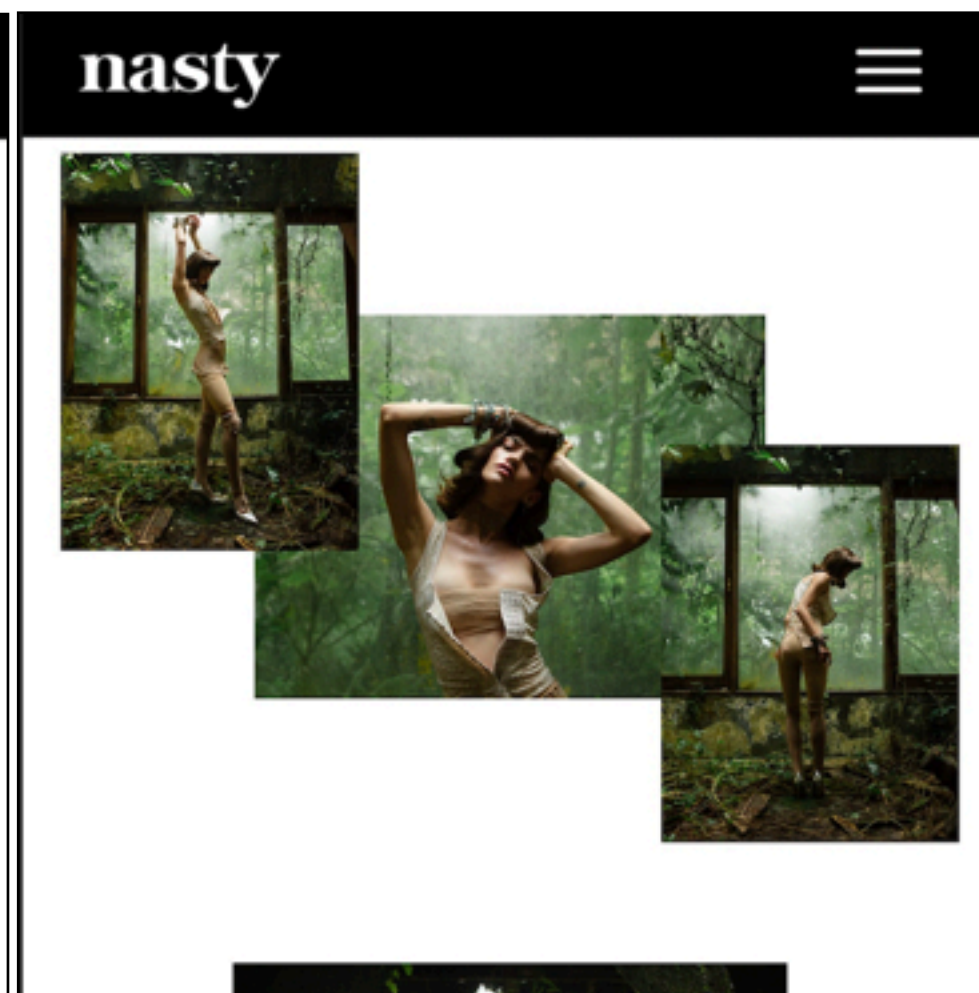
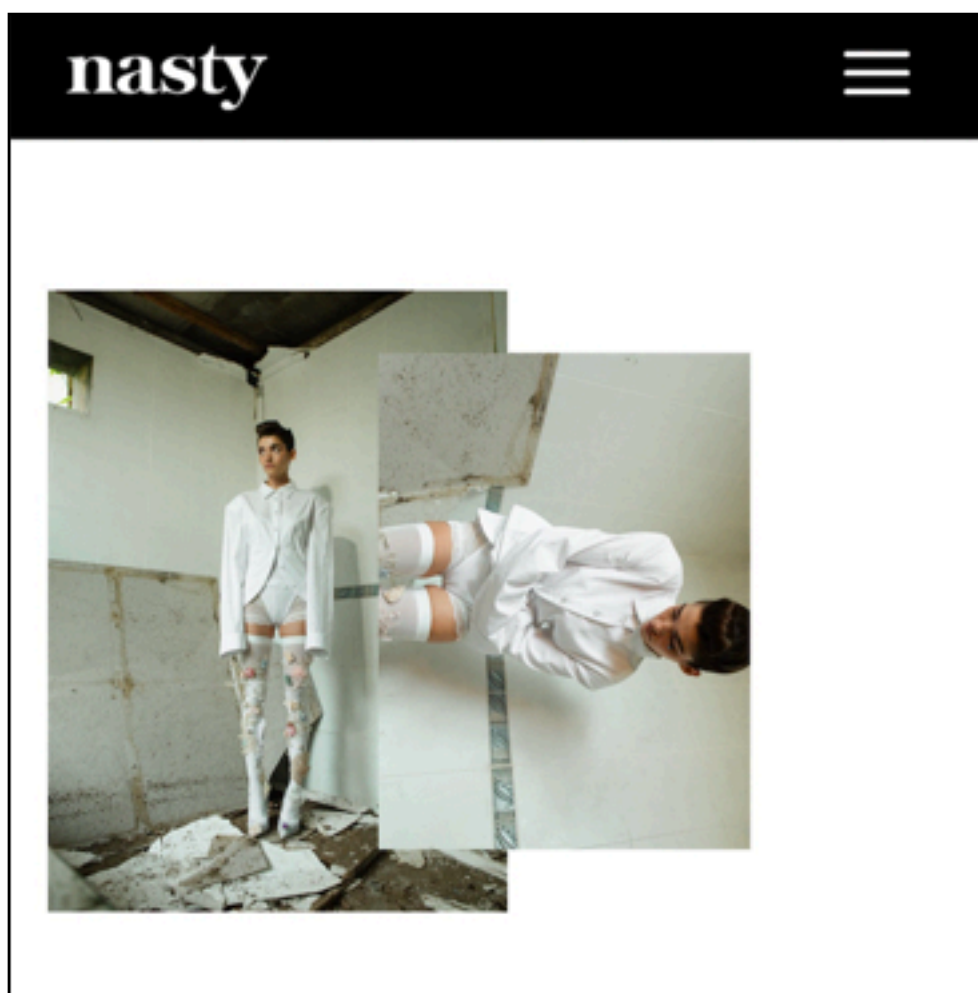




Beautiful Error

Photographed by Lila Alimova.

She, doll-like, wakes up in an abandoned house, disconnected from herself. The space mirrors her inner world. Empty, forgotten, broken. Between plastic and flesh, between control and chaos we fall apart. And we are reborn. A story by Lila Alimova.

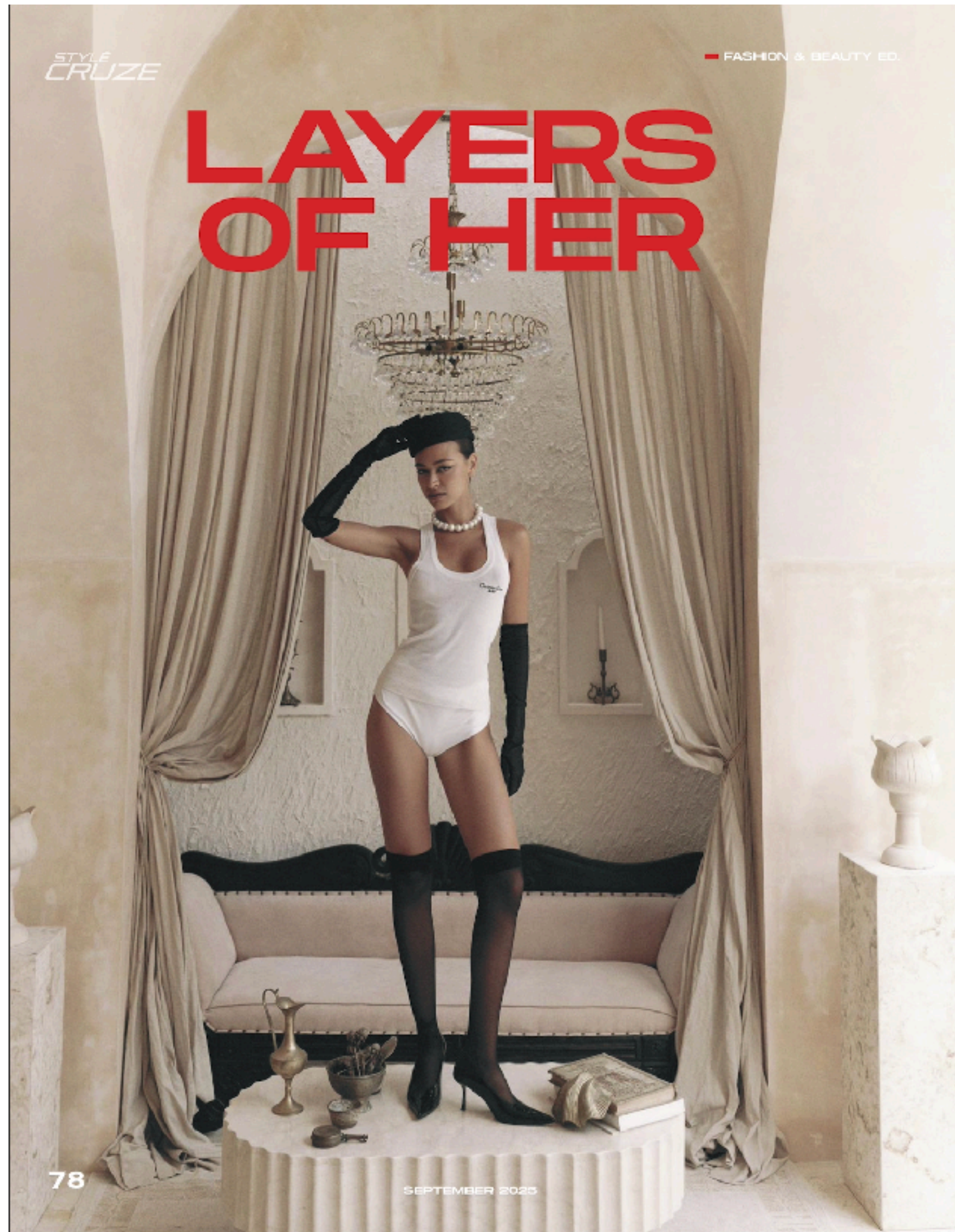


Editorial for Nasty Magazine





«A visual exploration of the boundary between form and inner tension. An aesthetic of collision: between image and collective dynamics, between the desire to control and the need to let go.»

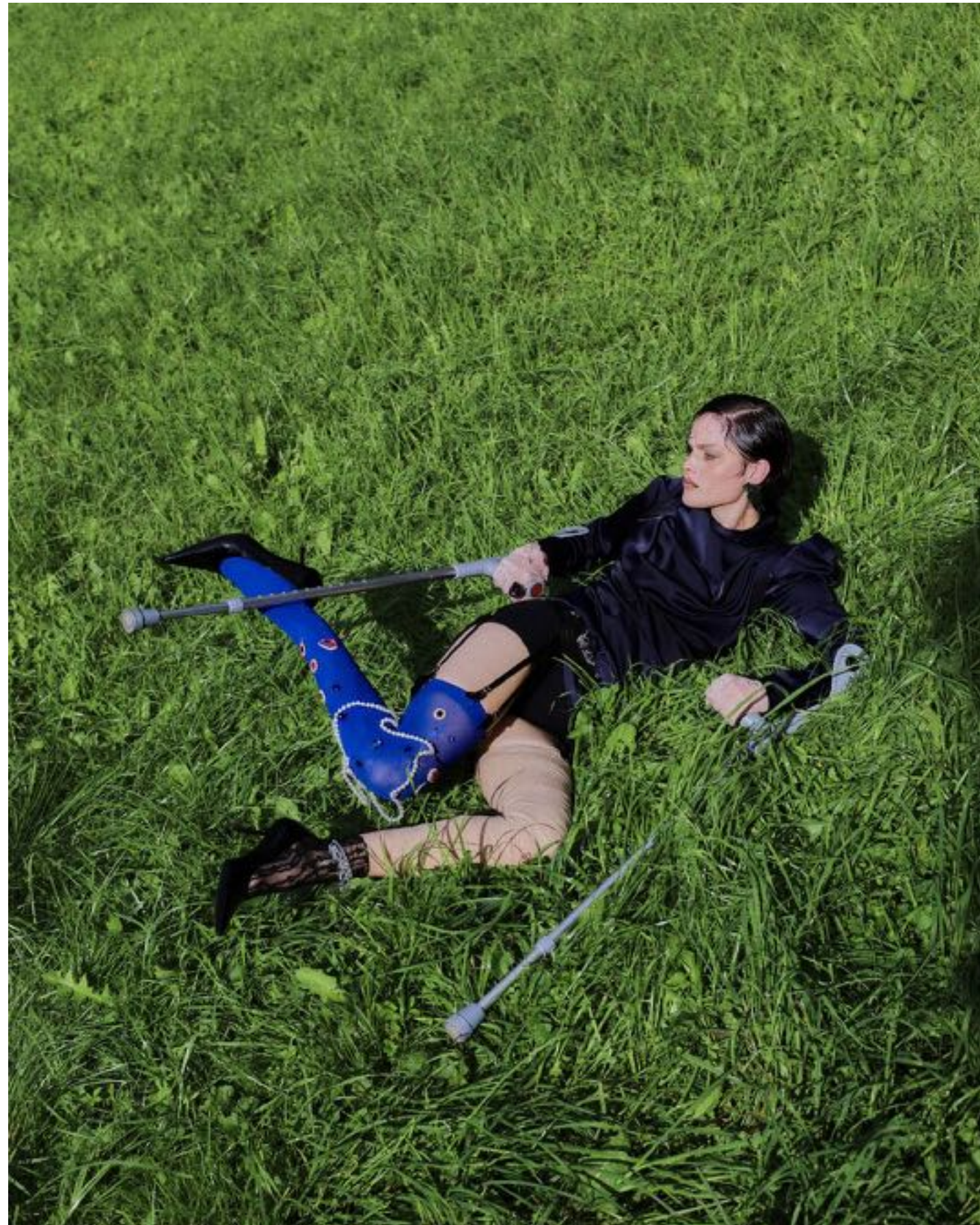


Feminine energy is always layered.





A visual allegory of a descendant of a refined dynasty, balancing between her innate nobility and the temptations of the modern world.



[Instagram: @lilaalimova](https://www.instagram.com/lilaalimova)

Noble Decay



hello@lilaalimova.com



Desire, staged.



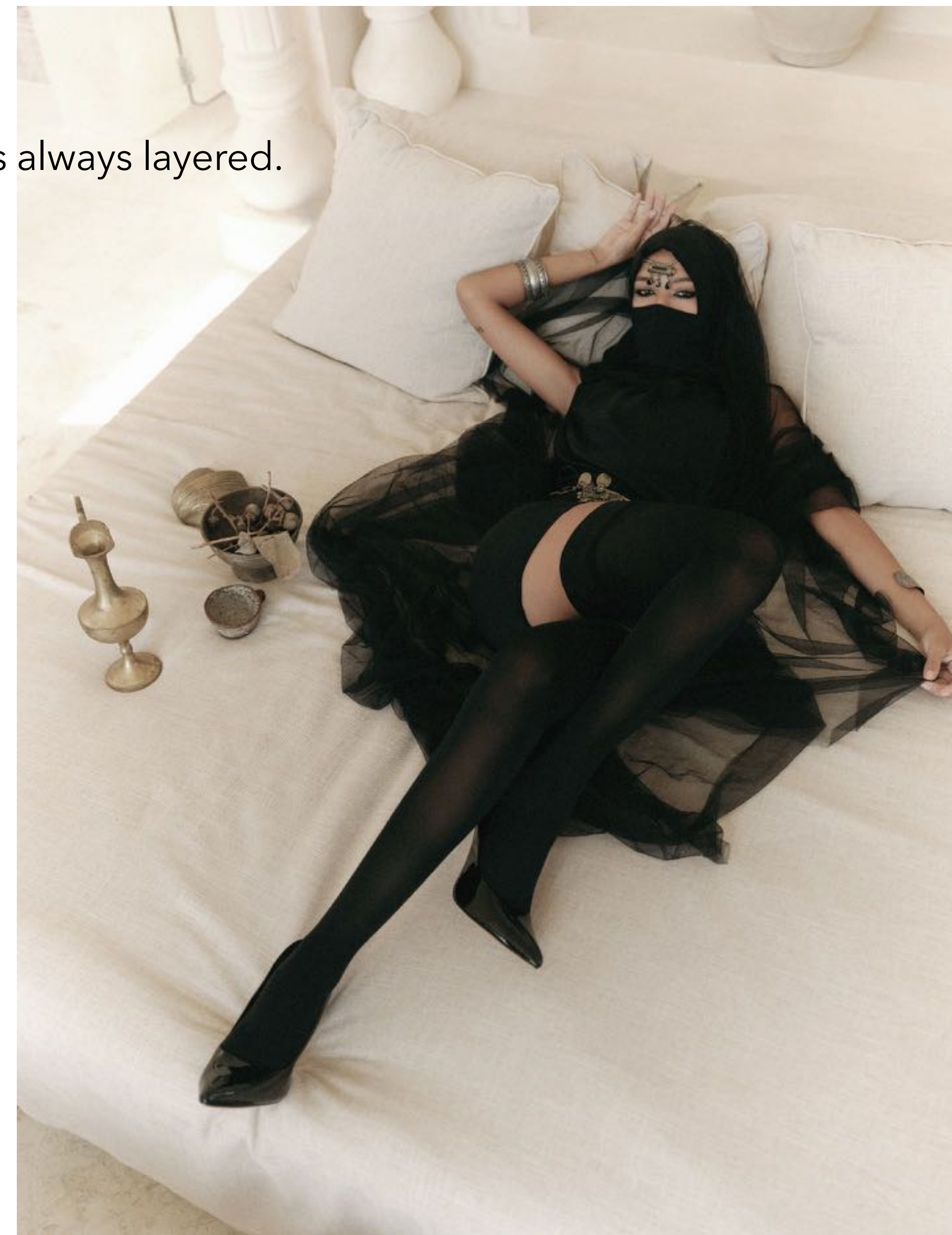
Feminine energy is always layered.

In this project, I explore how it can be both hidden and provocative, soft and dangerous. It's a visual dialogue between the inner and the outer.

Inspired by the duality of image — concealed and revealed, restrained and bold — the series investigates how femininity can be both a myth and a living truth.



Feminine energy is always layered.





Instagram: @lilaalimova



Style as the “sound” of the author — a unique, inimitable voice that emerges in moments of sincerity.

Editorial for Nasty Magazine

hello@lilaalimova.com



BEAUTIFUL ERROR

[Watch film](#)



Primitive, yet refined.
Wordless femininity.
The contrast between rigid
structure, bodily textures,
and raw nature transforms
fashion into instinct — and
instinct into fashion.

Once, this was a place to play. Now she's grown up — but it's too late. Wearing her mother's stockings and her father's jacket, she slips through the shadows of memory, exploring the edge where a girl becomes a woman, but no longer believes in fairytales.



Pastoral Vice



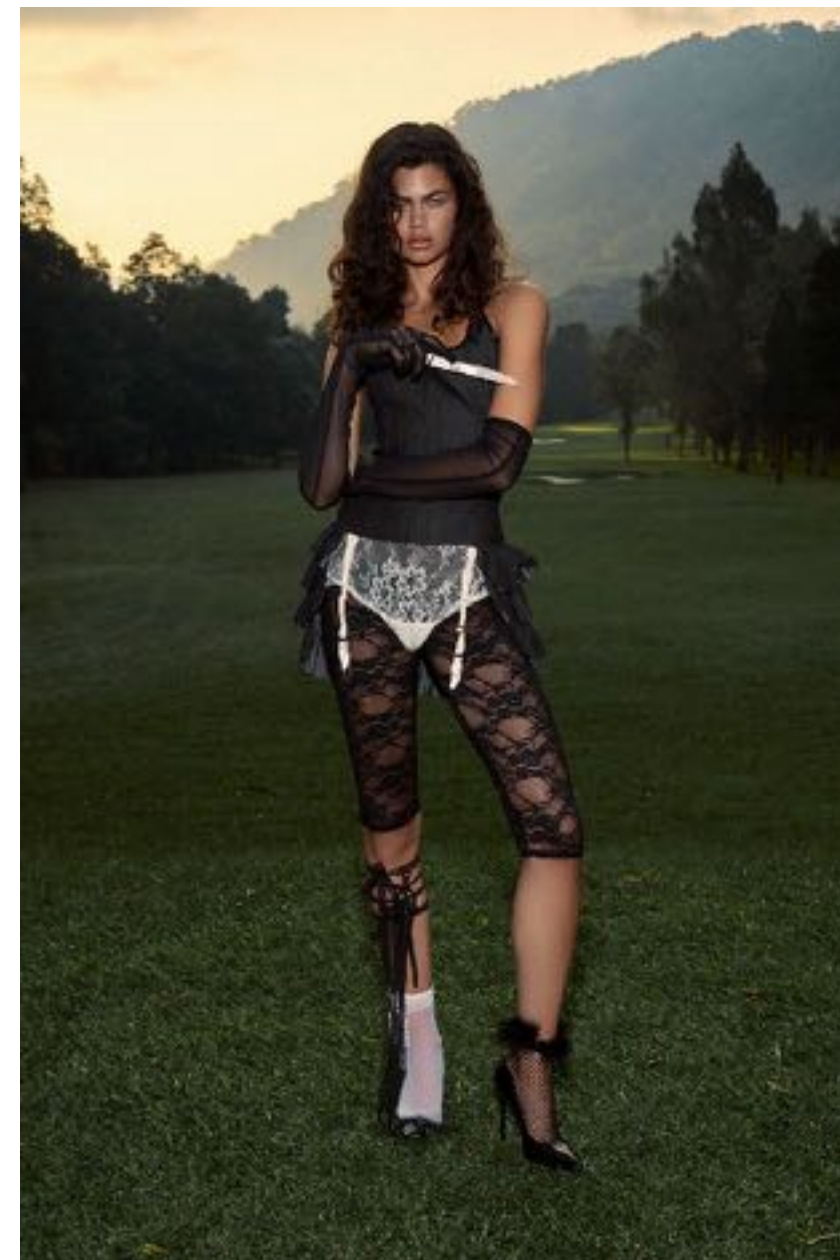
A tension between innocence and desire.

Nature becomes a stage — quiet, seductive, almost deceptive.

The body exists in contrast: soft yet deliberate, intimate yet distant.

There is a sense of restraint, as if something is held back — or about to unfold.

This is not purity, but a constructed illusion of it.





Primitive, yet refined. Wordless femininity.
The contrast between rigid structure, bodily textures, and raw nature transforms fashion into instinct — and instinct into fashion.



Pastoral Vice

Aesthetic of innocence intertwined with seduction. The forest as a stage, the body as a protest.



Discipline of desire.

Art-direction and style by me.

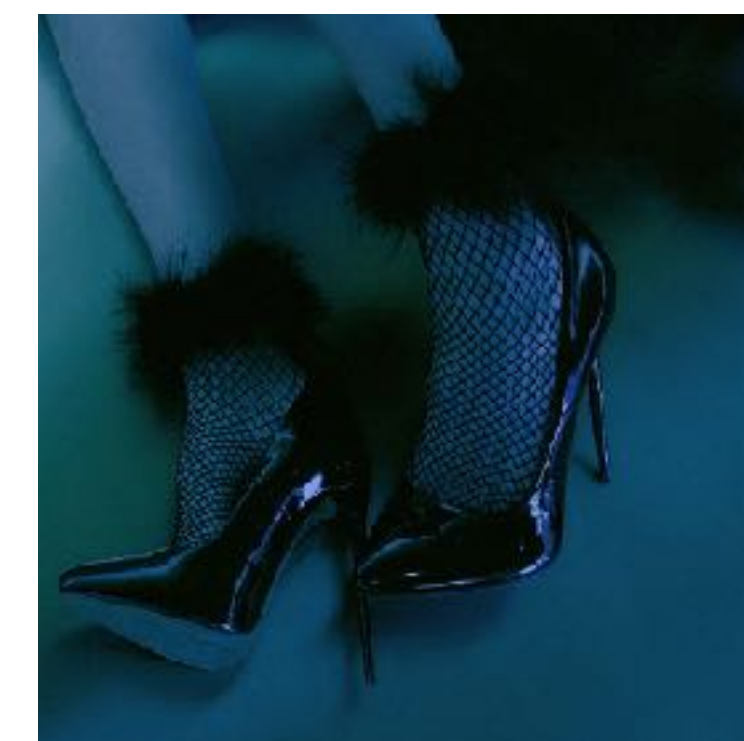




Synthetic Glow



A visual exploration of desire, isolation, and artificiality. She lives in a world made of soft plastics, muted reflections, and synthetic light. Is she real — or just a projection?





Pastoral Vice





Intimacy, constructed.





Once, this was a place to play.
Now she's grown up — but it's too late.
Wearing her mother's stockings and her father's jacket,
she slips through the shadows of memory,
exploring the edge where a girl becomes a woman,
but no longer believes in fairytales.

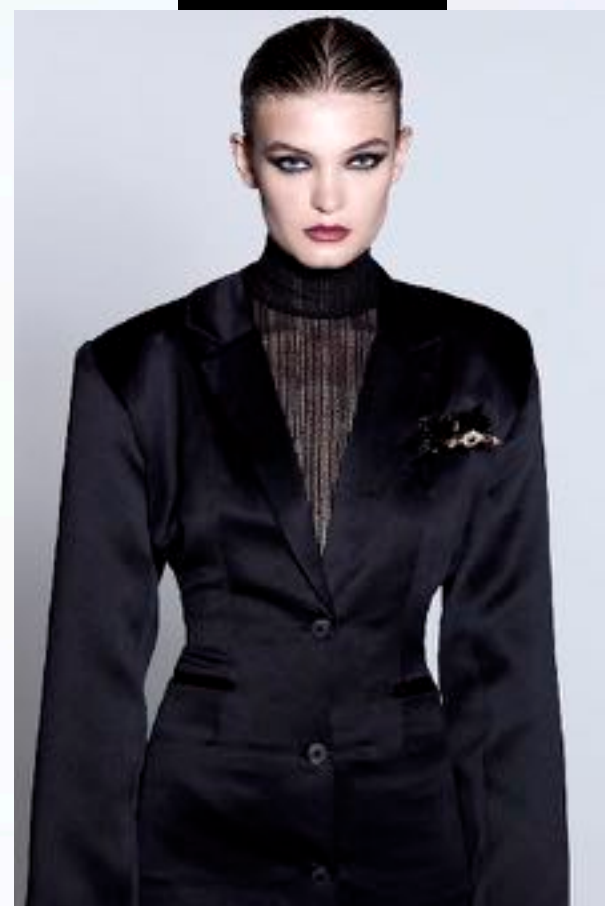


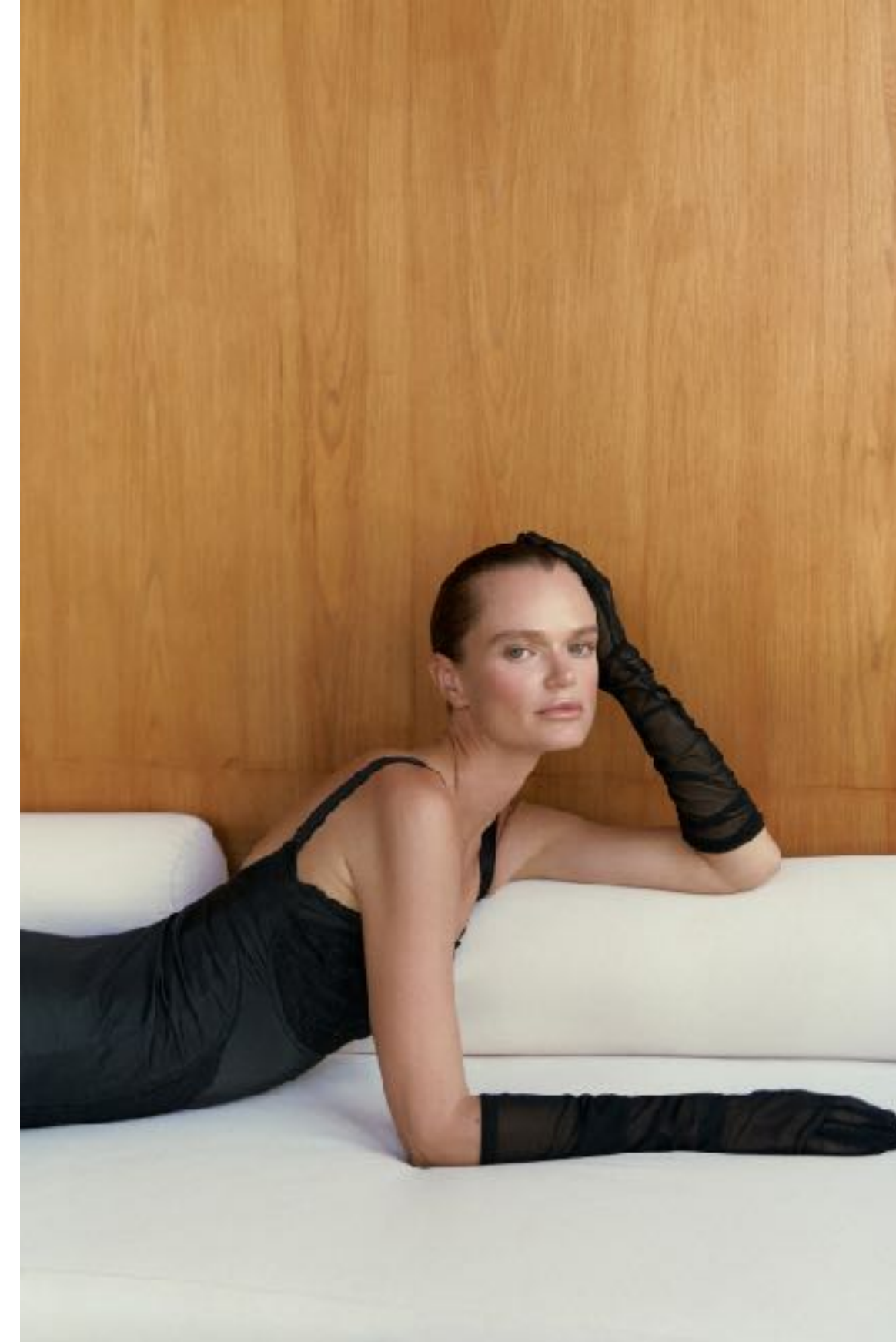
Spoiled Dollhouse





She – a diagram





Innocence, slightly displaced.







A visual manifesto on the edge of fetish and fashion myth.
Clad in a latex bodysuit, the heroine emerges as if after an apocalyptic
storm — survivor or sea creature reborn.



Black fish



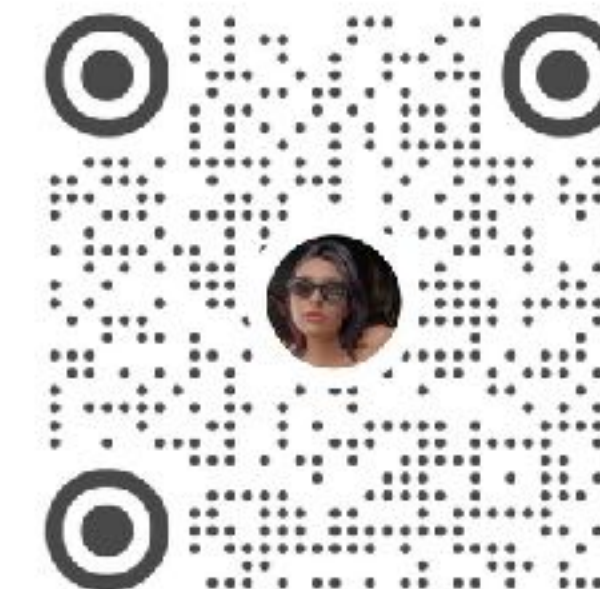
Stillness as a statement.



Lila Alimova



Отсканируйте QR-код, чтобы добавить меня в друзья.



Lila Alimova | Stylist

rednote ID: LilaAlimova

扫描二维码, 在小红书找到我

thanks!

Style as the “sound” of the author — a unique, inimitable voice that emerges in moments of sincerity.

Instagram: [@lilaalimova](https://www.instagram.com/lilaalimova)

Welcome to my portfolio

hello@lilaalimova.com